

File name: C:\ONEDRIVE\AECOM\LUTZ PARK PROPOSAL - GENERAL\1900_CAD_GIS\1910_CAD\20-SHEETS\C-3.0 PROPOSED CONDITIONS.DWG
 Last saved by: FUNSETHN
 Last Plotted: 2024-09-16
 Project Management Initials: Designer: _____ Checked: _____ Approved: _____
 ANS I D 22' x 34'

REGISTRATION

ISSUE/REVISION

| I/R | DATE | DESCRIPTION |
|-----|------------|-------------------------|
| 0 | 09.16.2024 | ISSUED FOR CONSTRUCTION |

KEY PLAN

PROJECT NUMBER

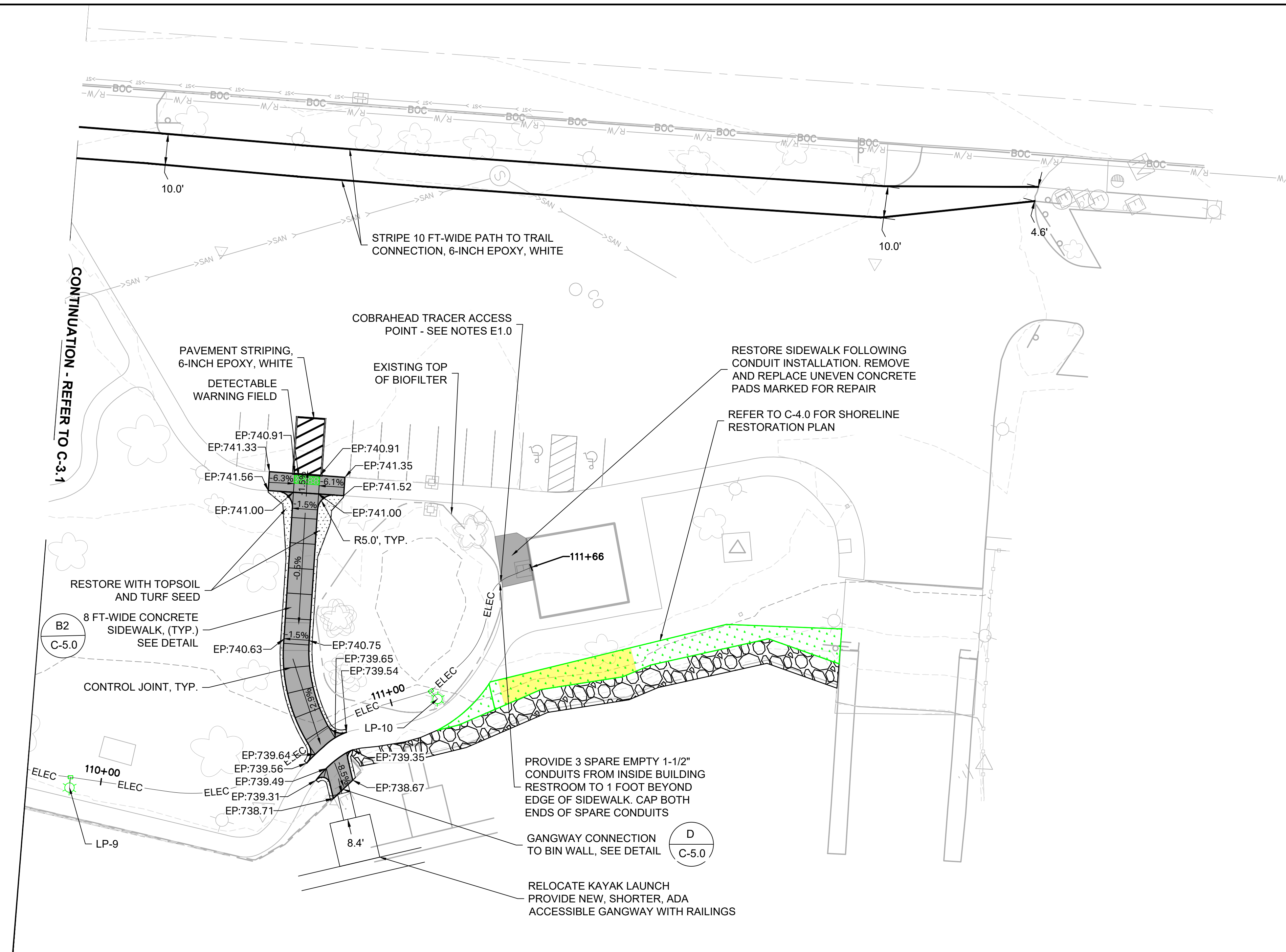
60693153

SHEET TITLE

PROPOSED CONDITIONS - 03

SHEET NUMBER

C-3.2



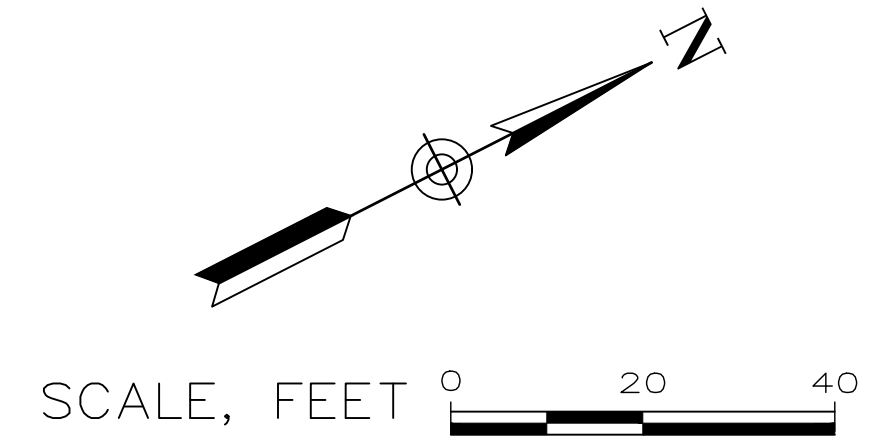
ELECTRIC (LP - 9)
 STA. 109+90.39
 N=557764.94
 E=823680.18
 STAKED (TOP)=739.42'

ELECTRIC (LP - 10)
 STA. 111+13.13
 N=557881.73
 E=823708.15
 STAKED (TOP)=740.08'

PLAN VIEW

PROPOSED LEGEND

| | |
|--|-------------------------------|
| | LIGHT POLE AND BASE |
| | HAND HOLE |
| | CONCRETE PAVEMENT |
| | BOARDWALK |
| | LANDSCAPE RESTORATION |
| | SHORELINE EROSION REMEDIATION |
| | SHORELINE VEGETATION |
| | HEAVY RIP RAP |
| | UNDERGROUND CONDUIT |
| | LIMIT OF WORKS |
| | DETECTABLE WARNING FIELD |



- GENERAL NOTES:**
1. SAW CUT IN ACCORDANCE WITH CITY OF APPLETON STANDARD SPEC SECTION 3.
 2. CONCRETE JOINTS TO BE SAW CUT ONLY.
 3. RESTORE WITH TOPSOIL AND SEED IN ACCORDANCE WITH CITY OF APPLETON STANDARD SPEC SECTION 7.2. STABILIZE WITH MULCH IN ACCORDANCE WITH WDNR TECH STANDARD 1058.