

REV	DATE	ISSUED FOR
A	06/20/18	REVIEW

DRAWN: DR
 CHECKED: JK
 DOCUMENT NO. 16.024

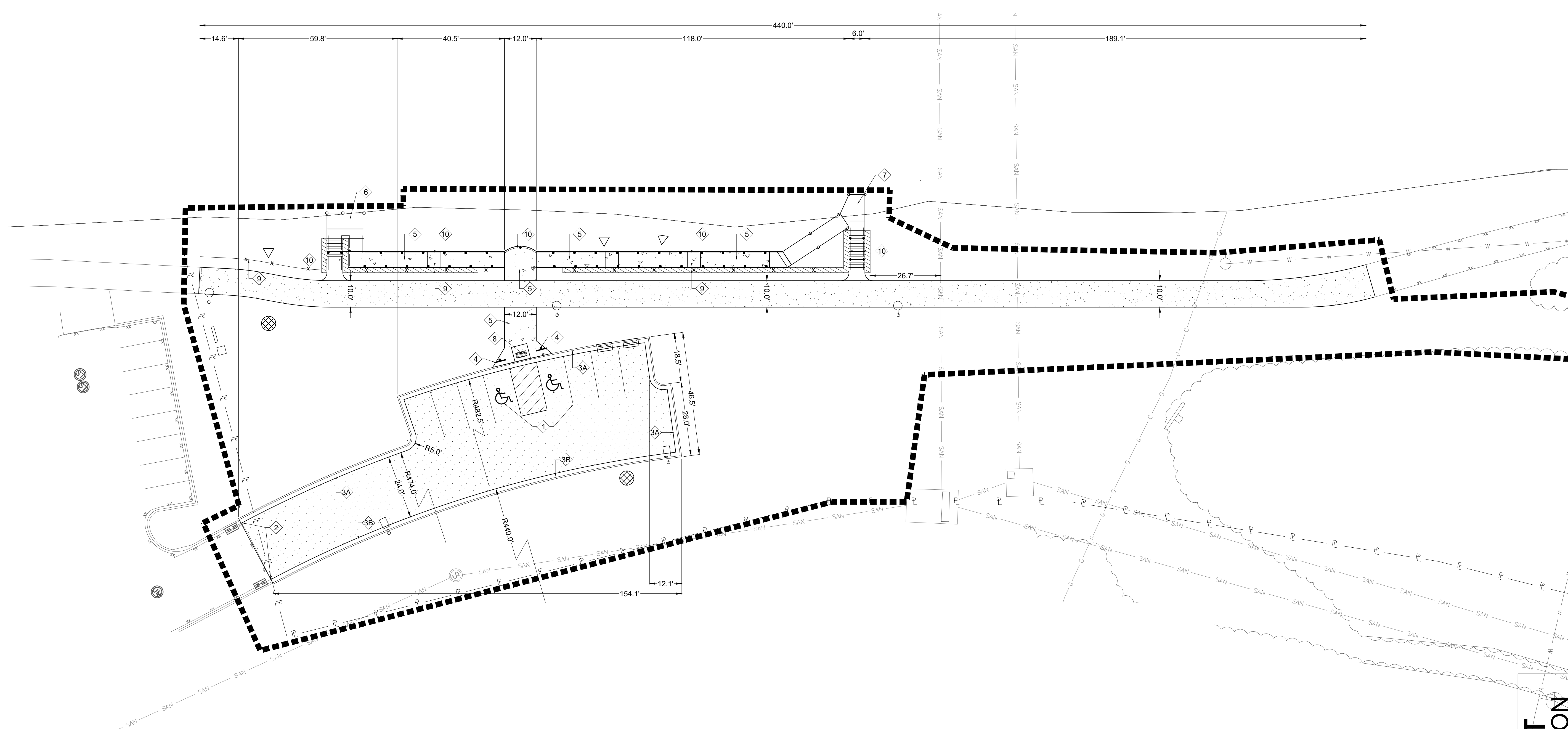
RETTLER
 corporation
 3317 Business Park Drive, Stevens Point, WI 54481
 Telephone: 715-341-2653, Fax: 715-341-0451
 email: info@rettlr.com website: www.rettl.com

SITE REDEVELOPMENT PROJECT
 SITE LAYOUT PLAN - PARKING AREA

PRELIMINARY DRAFT
 NOT FOR CONSTRUCTION

LOWER TELULAH PARK
 APPLETON PARKS AND RECREATION DEPT.
 1300 E NEWBERRY ST.
 APPLETON, WISCONSIN 54915

C301



SITE LAYOUT GENERAL NOTES

- CONTACT DIGGER'S HOTLINE 5 WORKING DAYS PRIOR TO THE START OF CONSTRUCTION.
- CONTRACTOR SHALL BE RESPONSIBLE FOR LOCATING PRIVATE UTILITIES PRIOR TO THE START OF DEMOLITION/CONSTRUCTION.
- ALL PROPOSED DIMENSIONS ARE REFERENCED PARALLEL OR PERPENDICULAR TO THE PROPOSED FEATURES SHOWN.
- GRADE, LINE, AND LEVEL SHALL BE REVIEWED IN THE FIELD BY THE PROJECT MANAGER.
- SEED, FERTILIZE, AND CRIMP MULCH ALL GENERAL LANDSCAPE AREAS DISTURBED DURING CONSTRUCTION IN ACCORDANCE WITH THE PROJECT MANUAL SPECIFICATIONS EXCEPT THOSE AREAS INDICATING SOD.
- ALL CONTRACTORS SUBMITTING A BID SHALL VISIT THE SITE AND REVIEW THE EXISTING SITE CONDITIONS PRIOR TO THE BID DATE.
- ALL RADIUS DIMENSIONS AT CURB LOCATIONS ARE TO THE BACK OF CURB.

SITE LAYOUT LEGEND

- 4" TYPE E-1.0, HOT MIX ASPHALT
8" DENSE GRADED BASE COURSE
GEO-GRID, TENSAR - TRIAX TX7
- 3.5" TYPE E-1.0, HOT MIX ASPHALT
12" DENSE GRADED BASE COURSE
- 5" REINFORCED CONCRETE
6" DENSE GRADED BASE COURSE
- SOIL/FILL CONTAINMENT AREA
 - 6" IMPORTED CLAY CAP
 - 6" SALVAGED TOPSOIL
- RETAINING WALL
- SITE LIGHTING (SEE ELECTRICAL PLANS)
- BASE BID LIMITS OF CONSTRUCTION

SITE LAYOUT KEYNOTES

- 1 PARKING LOT STRIPING (TYP.) → (1 C701) (3 C701)
- 2 18" - 24" CURB AND GUTTER TRANSITION
- 3A 24" CURB & GUTTER - TYPE A - CATCH → (4 C700)
- 3B 24" CURB & GUTTER - TYPE B - REJECT → (4 C700)
- 4 VAN ACCESSIBLE PARKING SIGN & PAVEMENT SYMBOL → (2 C701)
- 5 REINFORCED CONCRETE SIDEWALK
- 6 TIMBER LANDING FOR FUTURE FISHING WHARF → (C705 C706 C707 C708 C709)
- 7 TIMBER LANDING FOR FUTURE KAYAK/CANOE LAUNCH → (C705 C706 C707 C710 C711)
- 8 ADA ACCESSIBLE CURB RAMP WITH DETECTABLE WARNING FIELD
- 9 DECORATIVE RAILING → (4 C701)
- 10 WOOD HANDRAIL → (1 C705) (3 C705)

RETTLER CORPORATION, INC. HOLDS THE RIGHTS TO COPYRIGHT IN AND TO THESE PRINTS, DRAWINGS AND DOCUMENTS. NO REPRODUCTION, COPYING, ALTERATION, MODIFICATION, USAGE, INCORPORATION INTO OTHER DOCUMENTS OR ASSIGNMENT OF THE SAME MAY OCCUR WITHOUT THE PRIOR WRITTEN PERMISSION OF RETTLER CORPORATION, INC.
 ©2018 RETTLER CORPORATION, INC.

